

New Christian School Is Established in Polson

A new Christian day school — Polson Christian Academy — will open in Polson this fall at the First Baptist Church. Student testing and matriculation will start on August 18 and opening day of classes is Tuesday, Sept. 12.

Sunday, June 29, has been designated "PCA Day" at the First Baptist Church.

Enrollment, open to all on an application basis, will be limited to 35 students the first year.

Polson Christian Academy will teach grades two through eight in its first year of operation. The academy is based on the Accelerated Christian Education concept of individualized instruction for each student.

The Rev. Laurens Edwards, pastor of the First Baptist Church, will serve as principal of the academy. For this assignment, he received special training at Accelerated Christian Education headquarters in Dallas, Tex.

Pastor Edwards and his family have lived in Polson since 1965. He holds Bachelor of Arts degree from Los Angeles Baptist College and a Master of Theology degree from Los Angeles Baptist Theological Seminary.

Head teacher will be Jack Hane, a 1962 graduate of Montana State University where he received a Bachelor of Science Degree. In 1969, he received his Masters Degree from Montana State University. For 20 years he taught in public schools in Plains and Wolf Point.

For the past three years he taught in Grace Baptist Christian School in Redding, Calif. Hane has received outstanding recommendations from each school in which he has taught. The recommendations are available at First Baptist Church and are on file with the State Supt. of Public Instruction in Helena.

Hane will be assisted in teaching duties by his wife Helen, who has had teaching experience in Wolf Point and Redding. The Hanes have three children — two boys and a girl — ages 19, 16 and 15.

Commenting on the academy's role and basic philosophy, Pastor Edwards said "The Bible is accepted as a code for life, God is acknowledged as our Creator, respect for authority will be taught and love of country is encouraged."

He further commented "A Christian School is an extension of the Christian home in training young people for time and eternity in a Christian environment.

School staff work closely with parents to train the whole child.

"Attendance at PCA is a privilege and not a right. The goals of this school are not to reform, but to train Christian youth of every ability in the highest principles of Christian leadership, self discipline, individual responsibility, personal integrity, and good citizenship. PCA stands without apology for the old-time Gospel and highest standards of morality and Christian behavior.

"The Christian School movement is growing in size and maturity. This trend is accelerating across our nation. Christian parents realize the futility of government schools trying to teach the moral and spiritual truths necessary for responsible maturity.

First Baptist Church realized and accepted its responsibility to provide a school with a Christian atmosphere with high academic standards, and offers it as an opportunity to the whole community."

Explaining the curriculum, Pastor Edwards noted "The Accelerated Christian Education program is planned and directed towards the individual and his learning ability. He can learn to develop and work at his capacity and according to his own unique capabilities. Through controlled motivation, the student accelerates to his own success.

"A.C.E. places the tools of academic learning in the hands of the students. Professional guidance, with the use of cassette lectures, resource books, self-tests and examinations, insures control and achievement."

As for Christian training, Pastor Edwards said "Education is life and the Bible is the book of Life. It is the basis of all text materials used by A.C.E. Humanism, Progressivism, Situation Ethics and the New Morality are refuted and replaced by the Absolute Standards of Right and Wrong. All curricular materials are presented in harmony with the letter and spirit of the Bible. Christian teachers, using Christian curriculum with spiritual methods in a Christian environment, will produce Christian results."

He added "In A.C.E., the pupil is central and active. The teacher prescribes and guides self-directional materials prepared by Christian Educators, and teachers with proficiencies in the core curriculum and many

(Continued On Page 13)



Jack Hane



Helen Hane



Rev. Laurens Edwards

New Christian School Established -

(Continued from Page One)

years of classroom experience. Through controlled motivation, student learning through action and involvement is realized.

"Children do not come to school as failures, they go home this way. If a child is placed in an academic situation beyond his capability, he is headed for failure, becomes frustrated and begins to act irresponsibly. Most delinquents are school failures.

"A.C.E. places emphasis upon the greatness of America's heritage and the sacrifices of its heroes. America is a republic which guarantees liberties to educate and preserve freedom. We unashamedly teach the Biblical doctrines of self-discipline, respect for those in authority, obedience to law and love for flag and country.

STATEMENT OF FAITH

We believe in and teach these basic principles:

- 1) The inspiration of the Bible, equally in all parts and without error in its origin;
- 2) The one God, eternally existent Father, Son and Holy Spirit, Who created man by a direct immediate act;
- 3) The pre-existence, incarnation, virgin birth, sinless life, miracles, substitutionary death, bodily resurrection, ascension to Heaven, and the second coming of our Lord Jesus Christ;
- 4) The fall of man, the need of regeneration by the operation of the Holy Spirit on the basis of grace alone, and the resurrection of all: to life or damnation;
- 5) The spiritual relationship of all believers in the Lord Jesus Christ, living a life of righteous works, separated from the world, witnessing of His saving grace through the ministry of the Holy Spirit.

Standards of Conduct

"Students of Polson Academy are expected to refrain from talking about or engaging in cheating, swearing, smoking, gambling, rock music, dancing, drinking alcoholic beverages, and using, distributing or taking narcotics. Students who participate in such activities are subject to suspension. Students are expected to act in an orderly and respectful manner, maintaining Christian standards in courtesy, kindness, language, morality and honesty. Students must agree to strive toward unquestionable character in dress, conduct and attitude.

Dress Code

"It is not intended that students dress expensively. They are to dress neatly in modest apparel conforming to Christian standards and pleasing to the Lord. The school administration may prescribe further guidelines including uniforms if

necessary. They will resolve all questions or conflicts that may arise.

Church Affiliation

"Students and parents are expected to regularly attend and belong to a Bible-believing church.

Christian Leadership Training

The Polson Christian Academy believes in training young people for life. Since the Bible is the Book of Life, an emphasis is placed upon it daily.

Devotions: Students are assigned to groups of 12-18 and meet in devotional periods of 45 minutes Monday, Tuesday, Thursday and Friday morning. Principles of life are organized, outlined, illustrated and discussed in meaningful sessions with use of the overhead projector.

Chapel: Weekly institutional sessions are held where the student identifies his education with the ministry of the church. Local pastors and staff preach the Word of God with a nondenominational though theological intent.

Special Meetings: For one week during the fall and again during the spring, the students plan and assist in implementing a series of revival and evangelistic meetings to which attendance is required. Students must bring Bibles to all devotional, chapel and special meetings.

Admissions Procedure

- 1) View slide presentation at the school.
- 2) Read information regarding the school.
- 3) Request that your pastor send a letter of recommendation to the school.
- 4) Submit application accompanied by registration fee and previous report card.
- 5) Arrange for an interview with both parents, student and Principal.

6) Parents will be notified of acceptance.

7) Complete financial arrangements, review discipline covenant, and complete medical form.

8) Parent Orientation.

Fee Schedule

The Polson Christian Academy is an independent non-profit institution with an annual budget dependent upon tuition of its students and gifts of friends for operating expenses. All contributions are tax deductible.

Charges are a non-refundable \$25 for application, registration and testing fees; tuition at \$400 per year; Learning PACES at 75 cents each. School officials will explain how payments can be broken down, discount schedules, etc. upon request.

Accreditation

As for accreditation, Pastor Edwards commented, "This is our most frequent question. It breaks down into two areas of consideration: First, can students transfer

freely to and from our schools to public schools? Our answer based on experience of similar schools is a firm 'yes.'

"Second, are we a member of an accrediting association? And the answer is 'no' for the following reasons:

"Accreditation by a state governmental agency is an administrative mechanism designed to insure uniform education for all children in secular schools. It was established as governmental means by which school districts provide what the state educational agencies determine as minimum academic and facility standings for all schools. Accreditation teams, therefore, investigate and approve or disapprove facilities and curriculum in educational institutions according to the criteria developed by secular educational administrators.

"Accelerated Christian Education Schools have not sought accreditation by any governmental agency for several reasons: A.C.E. would be required to use textbooks adopted by the state. Such texts are developed by secular writers who in many ways reject our Lord Jesus Christ, and, in fact, extoll concepts contrary to teachings of the Bible. Furthermore, accreditation dictates that a school use a curriculum and employ a teacher whose standards are often in opposition to those of Christian institutions. It seems unreasonable for us to expect parents to withdraw their child from a government school with its academic and moral ills and place him in a private institution with the same curriculum, methods and objectives.

"Accreditation of a private Christian school is not necessary for a graduate who wishes to enroll in a college or university. Registrars of such institutions are interested in the academic merits of individual students, not in the accredited rating of their school. Thus they evaluate each applicant's academic aptitude through nationally standardized tests. The instructional program of A.C.E. is designed and implemented to properly train students for life and prepare those who wish to continue their education beyond high school."

August 10 Open House

An open house to acquaint the public with the teachers and to view the A.C.E. materials and to inspect the new facilities is planned for August 10.

Incidentally, the First Baptist Church has been part of the Polson community since 1918. Pastor Edwards said that during the depression years, it struggled for survival like everyone else did. However, the postwar years were marked by growth and expansion.

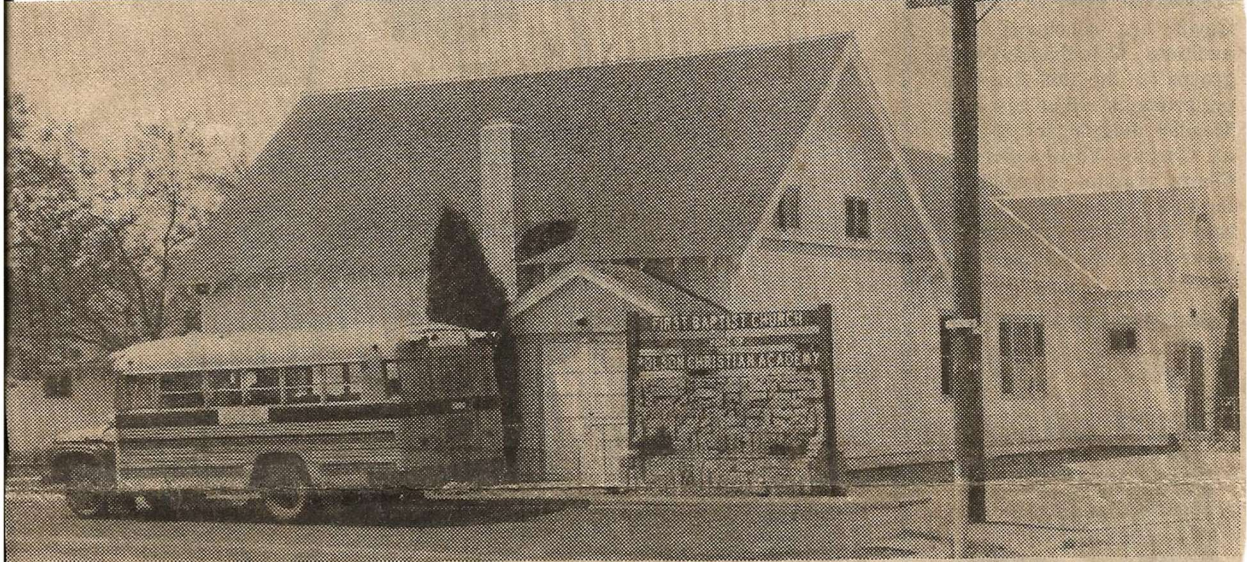
In 1967 a new sanctuary was added on the west side of the old church shown in the foreground of picture. During this change the old sanctuary was remodeled and used for Sunday School rooms and an activity room. This space soon proved to be inadequate and further expansion was necessary.

A new educational wing was built in 1967 under the direction of Pastor Edwards. After seven years of occupancy the people of First Baptist agreed to utilize this space all week rather than just several hours on Sunday.

In 1974 First Baptist voted to expand into a Christian Day School ministry. With over a 90 percent vote of approval, Polson Christian Academy came into existence. It is a ministry of First Baptist sponsored by the church and supported 100 percent by the church and student enrollment. No governmental aid or assistance of any kind is received or expected.

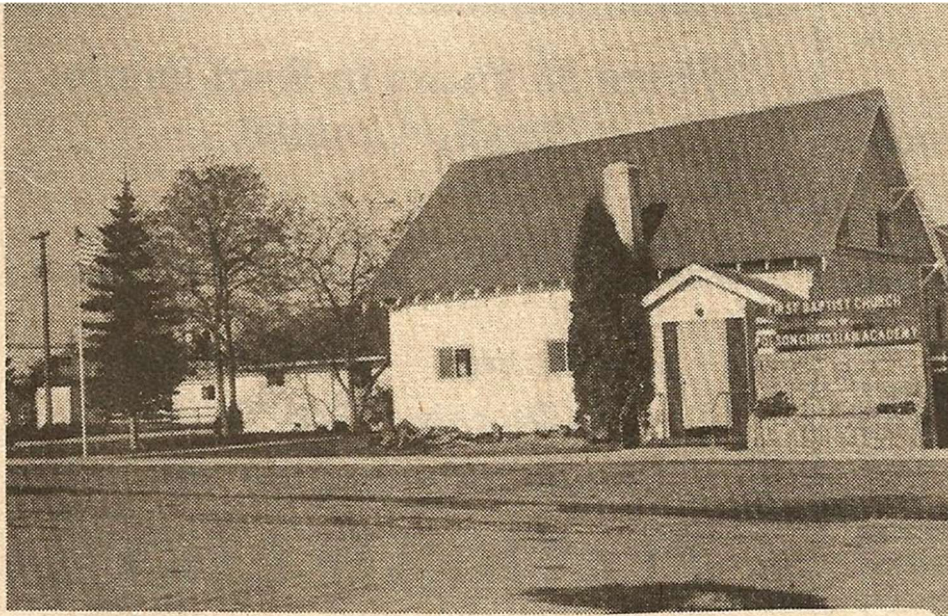
Initial plans contemplated a 1977 opening. The many details and work needed including hiring a qualified teacher proved too much to allow a 1974 opening and as a result, school was delayed a year.

Incidentally, the school facilities have met all local and state public health and fire standards by opening day.



POLSON CHRISTIAN ACADEMY will be located in the First Baptist Church complex in Polson. Enrollment for the first year of opera-

tion will be limited to 35 students in grades two through eight. (Courier photo)



FIRST BAPTIST CHURCH — Home of Polson Christian Academy — 702 First St. West. Sunday School, 9:45 a.m., Morning Worship, 11 a.m., Evening Worship, 7 p.m. Wednesday, Prayer Meeting, 7 p.m. (Academy starts Aug. 29) Church bus offered each service. Phone 883-4174. Mr. and Mrs. Dale McNally and Miss Nancy Jamison, Teachers.

*The Rev.
Laurens Edwards
Pastor*