

FIRST BAPTIST  
CHURCH

POLSON, MONTANA

1960's  
NEW BUILDING

## BUILDING OF EDUCATION UNIT

---

At Quarterly Business Mtg. on Jan. 20, 1966 it was proposed and accepted by the Church to have the Board, composed of the Pastor, Deacons, & Trustees to act as a Building Committee to look into the possibility of an addition, the costs, the advantages and disadvantages of various designs and plans and then to present to the church definite findings which can be voted upon, adopted, and then put into action.

Feb. 13, 1966, a section was marked off on the ~~west~~ south west end of the sanctuary, by the Nursery, 40'x50', and a rough sketch was shown to the Board of possible rooms in such a structure with a basement. It was decided to check the costs of a 30'x50' and 40'x50' basements respectively.

Feb 16 estimates were procured  
as follows:

Cement (Redi-mix) for -

30 x 50 - \$810<sup>00</sup> (54 yds)

40 x 50 - \$975<sup>00</sup> (65 yds)

Dig the Basement + Haul Dirty away

- \$175<sup>00</sup>

Rental on Forms - \$80<sup>00</sup>

Form Ties - \$30<sup>00</sup>

Feb 22 the depth of the sewer in  
the alley was to be looked into  
and a pamphlet procured from  
the Dept. of Building + Safety if at  
all possible.

Feb. 13, 1966 a Building Fund was officially started as announced from the pulpit. To this date there was \$46<sup>00</sup> in it. Also there appeared an announcement in the Bulletin.

Feb 20, 1966 Building Fund Envelopes were put out and placed in the pews. Nothing was said of them from the pulpit.

Feb 27, 1966 Building Fund Banks were procured and put out in the rear of the auditorium. About 100 were taken home on this date.

Through March, 1966, the building plans were discussed and the possibility of a basement is not certain. Much can be said pro + con.

Drains were looked into by going to the Water Dept + talking to water commissioner on Mar 22 and we cannot use the Federal Drain but must use city drain. The exact depth of which is still not determined.

Pray for the Lord's will!

April 4, 1966 - The monthly board mtg. - Pessimism was expressed as to the possibility whether we could build this year. The loan too was discussed and the feeling generally among the people is to first pay the parsonage off. The balance as of April 10 - about 775<sup>00</sup>.

April 10, 1966 - Easter Sunday - a special offering will be taken for the debt reduction of the parsonage.

\$300<sup>00</sup> was received on this debt reduction offering.

May 9, 1966 - Possibility of building this year is out of question but the parsonage can be paid off in 10 months + further offerings can be taken. The money paid into parsonage mortgage when paid off can go into building fund + the fund will possibly be in the amount of \$ by time to build.

Board Mtg July 8, 1966

- Reported bal. of \$425<sup>00</sup> in Building Fund.  
We have decided to set Aug. 31 for  
mtg of Comm. to discuss various  
designs + possibilities. Some pessimism  
evident as to going into debt for  
a building.

Board Mtg Aug 8, 1966

It was decided that for any  
real concrete plans to be made,  
a separate mtg. would have to  
be set aside for this, so ~~Sept 7~~  
Aug 30 was set as our first  
Building Com. Mtg.

Building Committee Mtg. Aug. 30, 1966

A diagram of the present structures was drawn up by the pastor & given to each com. member before the mtg. Each was to submit his plan of the addition including the essential of classrooms (6-8), bathrooms, kitchen, & dining hall.

Most of the men did submit such a plan & the enclosed plan was the one decided upon.

This plan will be memographed & presented to the members at the Oct. Bus. Mtg for approval.

It was the general feeling that in view of present financial picture of today's economy, we should not borrow any money, but build as the money is supplied.

It was felt that \$5,000 would put up the shell of this 36 x 60 addition with the studding on the interior before the winter of 1967. Then as the Lord enabled, we would finish the inside. All were in favor of this.

On Nov. 27, 1966 we burned the mortgage on the Parsonage of \$6,500. On the same day we had a special B.F. offering & received 269<sup>00</sup>.

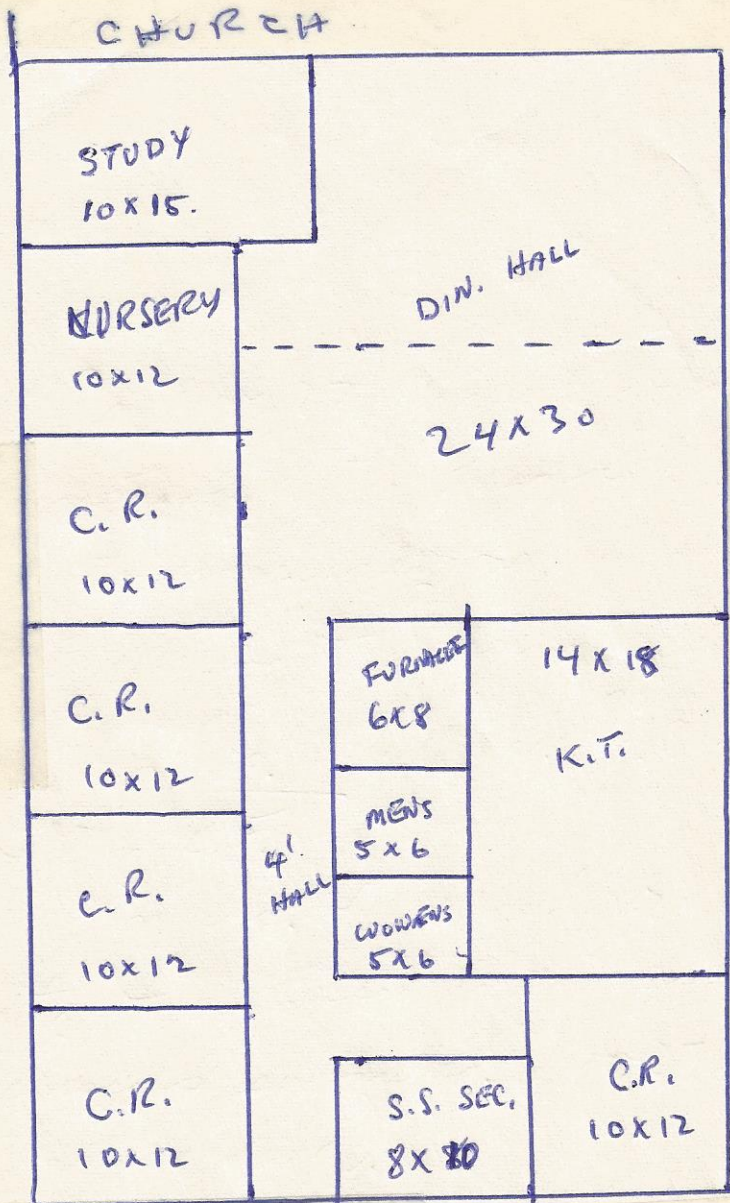
By Dec. 11 we had \$1191.29 in the B.F.

On Dec. 14 we had our board mtg & discussed further plans & revisions submitted. (Nov 27 was the dead line).

Bob Cass suggested 10 x 12 classrooms were too small, so we are trying to figure out how to increase the size.



Plan to be submitted to the Church for approval in Oct. Bus. Mtg.,  
Oct. Bus. Mtg approved plan.



One suggestion is to cut the  
Kit. down to 11 X 18 + thus making  
the C.R.'s all 10 X 15

Howard Orr suggested we move  
furnace to the end of the building +  
cut on C.R. out + thus have the additional  
room for the C.R.'s + Kit.

We are to check on the furnace  
this month + continue to think about  
these revisions.

One other suggestion was to  
move the Nur. across from the  
Rest Rooms + then close in the  
end of the hall - thus increasing  
the end E.R. + putting exterior  
door in that room.